

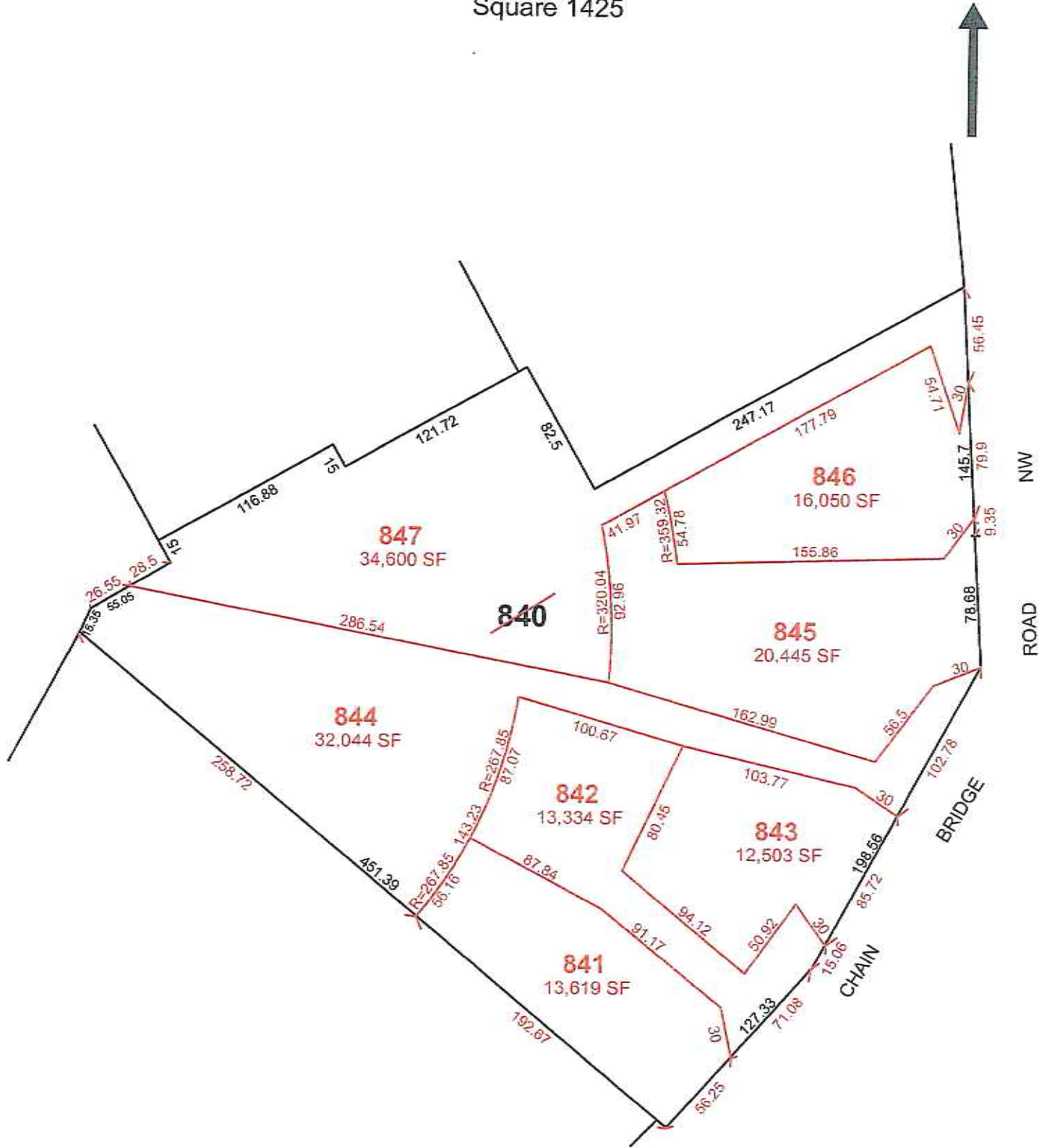
OFFICE OF TAX AND REVENUE  
ASSESSMENT DIVISION

3884-2



ASSESSMENT AND TAXATION PLAT

Square 1425



David Smith 1073383 10-21-19  
 Draftsman Reference Date

Scale, 1 inch 80 ft.

The Office of Surveyor of the District of Columbia shall admit this plat to record under the provisions of Chapter 7 of Title 47, District of Columbia Code, Designation of Real Property for Assessment and Taxation, and for other purposes.

[Signature] 10/23/19  
 Chief Assessor, Office of Tax and Revenue



